



LEGEND

Draw which Smart Activity you chose



Watching a PBS KIDS or PBS show



Playing a PBS KIDS game



Reading a book, magazine, or newspaper



Cooking or making something in the home



Exploring the world outdoors

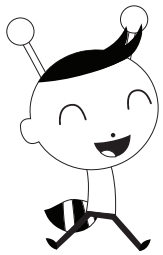
RetailMeNot

RetailMeNot supports Austin PBS's commitment to children's education in Central Texas.

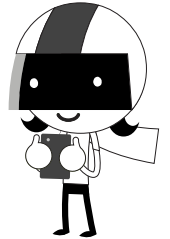
Sun.	Mon.	Tues.	Wed.	Thurs.	Fri.	Sat.
 JULY			1	2	3	4
5	6	7	8	9	10	11
12	13	14	15	16	17	18
19	20	21	22	23	24	25
26	27	28	29	30	31	1
2	3	4	5	6	7	8
9	10	11	12	13	14	15
16	17	18	19	20	21	22
23	24	25	26	27	28	29
30	31	 AUGUST 				

INSTRUCTIONS FOR THE AUSTIN PBS SMART KID SUMMER:

On the other side of this page, you see a calendar for July and August. Next to the calendar is a legend that has little pictures of different kinds of **Smart Activities**. Every day that you do a **Smart Activity**, you should draw that activity in the little box for that day. If you do more than one **Smart Activity** on a day, that's great! Choose your favorite activity from that day to draw in the box.



In order to win a prize from your friends at Austin PBS, you will need to have at least 25 pictures between July 1 and August 31 — that means 25 days of **Smart Activity**. Then, an adult will interview you and write your responses on this page. Take a photo of both sides of this paper, send those photos to maappleman@klru.org along with your name and address, and Austin PBS will send you a prize! We will also send you a certificate that you can show next year's teacher stating that you were a **Smart Kid** this summer!



ADULT INTERVIEW OF THE SMART KID

Write answers on the lines. ONLY DO THIS AFTER 25 SMART ACTIVITIES!

What activity did you do the most? _____

How many times? _____

Why do you think you did that activity the most?

What activity do you think you will remember for a long time after this summer?

Why will you remember that one?

What activity made your brain work the hardest? _____

What activity made your body work the hardest? _____

Which PBS KIDS character is most like you, and why?

What do you want Austin PBS to know about you and your family?

Mailing Address

Child Name: _____

Address: _____ **Apt. #** _____

City: _____ **State:** _____ **ZIP Code:** _____